



OUR MISSION

Providing global leadership at an industrial scale to produce the world's cleanest methanol to make everyday materials a part of the global climate solution.

EXCEEDING ENVIRONMENTAL STANDARDS

Our Water

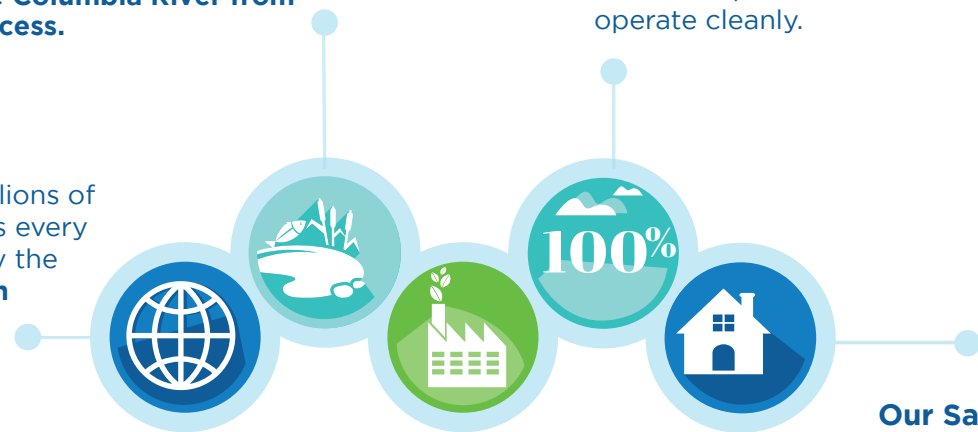
Protecting the river is important to us. We're the first company on the Columbia River to implement Zero Liquid Discharge (ZLD) technology to **eliminate all water discharge into the Columbia River from our process.**

Our Air

We'll offset **100%** of all related GHG emissions in Washington State, and we'll meet or exceed all state and federal requirements to operate cleanly.

Our Planet

Globally, removing millions of metric tonnes of GHGs every year makes this facility the **largest GHG reduction project in Washington State.**



Our Resources

Natural gas for our facility, sourced from Canada with strict environmental standards, will come from the existing Northwest pipeline infrastructure. A lateral pipeline, approximately 3 miles long, will need to be constructed to connect our facility to that current infrastructure.

Our Safety

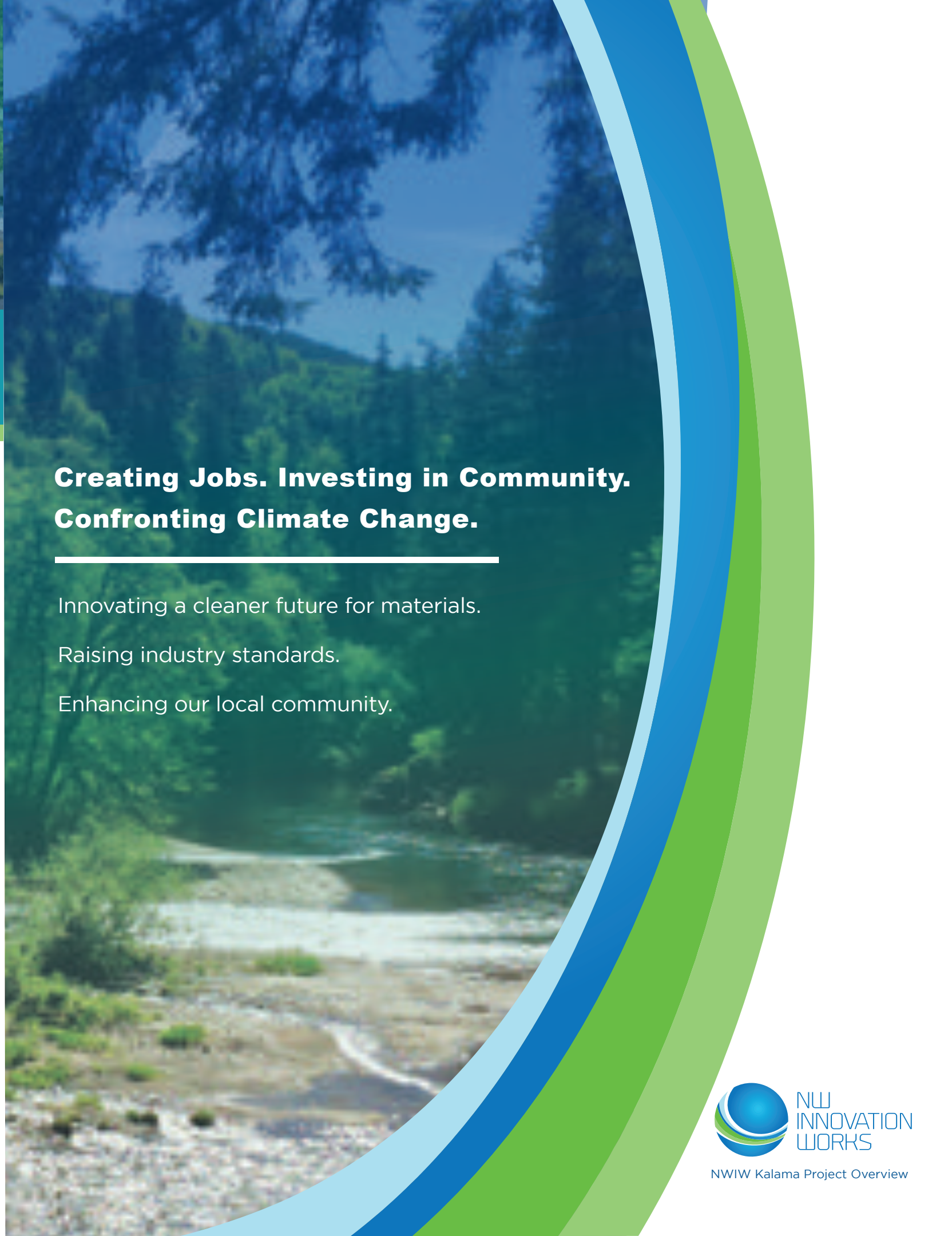
We've worked with local, state, and federal agencies to develop a robust set of safety designs and procedures, engineered for the facility, to **protect our workers and the community.**

Creating Jobs. Investing in Community. Confronting Climate Change.

Innovating a cleaner future for materials.

Raising industry standards.

Enhancing our local community.



CONFRONTING CLIMATE CHANGE

Climate change is a global crisis. NWIW provides innovative leadership by producing the world's cleanest methanol for materials production, storing carbon instead of releasing it for use as a fuel. We're setting new standards for environmentally sustainable industrial development and carbon emissions reductions.

REDUCE GLOBAL GREENHOUSE GAS EMISSIONS
by millions of metric tonnes per year

INVESTING IN COMMUNITY

We've committed to being a good community member and partner. NWIW's investment of over \$2 billion in Kalama and Cowlitz County provides global leadership in confronting climate change while creating family-wage jobs and generating much needed revenue for local governments to invest in schools, public safety, and infrastructure.

Creating a Higher Standard for Cleaner Materials Production

Our product will displace the use of coal for methanol production.

100%

We'll offset 100% of our project's greenhouse gas (GHG) emissions in Washington State.

We're committed to Washington State's Clean Air Rule. We'll reduce or mitigate GHG sources to reduce or offset emissions at our facility.

IMPROVING THE ECONOMY



200 permanent family-wage jobs

NWIW is bringing jobs to Cowlitz County.

\$71,000/year

Employee wages are estimated to average \$71,000/year plus benefits.

\$660 million
Helping Cowlitz County Thrive

In local spending on construction labor, goods, and services.*

\$625.9 million indirect economic impacts during construction.*

Up to 200 permanent jobs and up to an additional 500 indirect jobs.*

1,000 construction jobs
We've also partnered with local contractors and committed to using local union construction labor.

\$30+ million

\$30 to \$40 million in annual tax payments paid to state and local authorities during operations.*

Once operational, we'll provide \$3 million a year in school tax revenue. These funds will improve our local schools, parks, and infrastructure.

*Numbers are approximate and derived from an in-depth economic impact analysis developed by ECONorthwest.

A New Way

We're forging a path for global environmental leaders to pursue low-carbon materials standards. And we're creating the opportunity for the public to demand materials are responsibly sourced to confront climate change.



Community Partnerships



NWIW is partnering with Lower Columbia College, Workforce SW Washington, and the Cowlitz Economic Development Council to recruit, train, and support workers to give them opportunities to transform their lives.

20% of the NWIW workforce will be people who face barriers to employment.



By utilizing ULE technology, we'll lower GHG emissions at our facility by over 60% compared to industry standards.

NWIW is setting a new standard for clean manufacturing with Ultra Low Emissions (ULE) technology that is energy efficient, uses less natural gas, and reduces emissions.